

# Lakes, Waterways, and Outdoor Recreation Guide



# Table of Contents

Accommodations ..... 2  
 Acres Land Trust ..... 4  
 Agritourism ..... 5  
 Chain O' Lakes State Park ..... 10  
 Environmental Learning ..... 6  
 Equestrian Opportunities ..... 8  
 Fairs, Festivals & Fun Events ..... 9  
 Fishing ..... 16  
 Geocaching ..... 18  
 Golf ..... 23  
 Hiking Trails & Nature Paths ..... 20  
 Lakes & Waterways ..... 9  
 Lake List ..... 14  
 Parks & Recreation ..... 19  
 Map of Noble County ..... 12  
 Resources ..... 2

## THANK YOU

SPECIAL THANKS TO ALL WHO CONTRIBUTED  
 OUTSTANDING PHOTOS AND WRITTEN  
 ARTICLES FOR THE USE IN THIS PUBLICATION  
 AND FOR FUTURE NOBLE COUNTY VISITORS  
 BUREAU PUBLICATIONS.

## ON THE COVER

COVER PHOTO WAS TAKEN BY KEN SCHUMAN  
 OF LIGONIER. FRIENDS ENJOY A LEISURELY  
 PADDLE ON THE PEACEFUL ELKART RIVER.

# Kendallville Park and Recreation Department

Discover 750 acres of open space to roam!

- Sunset Park • Bixler Lake Park
- Outdoor Recreation Complex
- Trails • Beaches • Pavilions • Campground
- RECEPTION HALL RENTAL • PRE-SCHOOL
- AEROBICS - YOUTH & SENIORS PROGRAMS

**See our quarterly flyer for current programs**

*Mission Statement: "To provide quality parks and facilities,  
 open spaces, natural areas and leisure services which will enhance  
 the well-being of Kendallville citizens."*

211 Iddings Street • Kendallville • 260-347-1064  
 Campground 260-347-9941

A MUSEUM TO COLLECT, DISPLAY AND PRESERVE THE STORY OF WINDPOWER



## BAKER HALL

For Receptions and Gatherings  
 For more information call 260-242-0015.

## GIFT SHOP

- 10 Minute Video about Windpower
- Inside and Outside Displays

## 52 MODELS ON DISPLAY

Group Tours Welcome  
 (\$4 Adults, \$3.50 Senior Citizen, \$1.50 Student)

# Mid-America Windmill Museum

Our Website is [www.midamericawindmillmuseum.com](http://www.midamericawindmillmuseum.com)

South of U.S. 6 on 1000E  
 732 S. Allen Chapel Road  
 Kendallville, Indiana  
 260-347-2334

Hours: Tuesday thru Friday 10 a.m. - 4 p.m.  
 Saturday 10 a.m. - 5 p.m. • Sunday 1 - 4 p.m.  
 Closed Monday

## DOC'S

Do it  
**Best**

# HARDWARE

**PAINT HARDWARE  
 PLUMBING ELECTRICAL**

- Key Cutting
- Glass & Screen Repair
- Housewares
- Hunting & Fishing Licenses
  - Live Bait
- And lots more!
- UPS Service
- Propane Fill Station
- Ebay Trading Assistant

**Mon-Fri 7-7 • Sat 7-3:30 • Sun 10-4**

Don & Sally Merriman  
 122 N. Orange St., Albion  
**260-636-2790**  
[www.docsdoitbest.com](http://www.docsdoitbest.com)

# Welcome to Noble County!

The Noble County Convention and Visitors Bureau welcomes you to our area! Whether you are visiting with us, just passing through, or live here, we encourage you to enjoy our lakes, beautiful parks and nature preserves, fabulous festivals and events, historic sites and various attractions. Noble County is the home of unique museums, quaint small towns, vintage architecture, and is a great place to find Amish communities, Farmers' Markets, and "rural tourism" at its best.

Regardless of your preference for overnight accommodations, Noble County can meet your needs. Our innkeeper's offer authentic Victorian B&B's, a farm-stay B&B in Amish Country, quality award-winning hotels, and budget-minded motels. Campers will enjoy everything from primitive to full hook-ups, and our lakeside campgrounds can accommodate tents to RV's and motor homes. Camping cabins are available for family get-aways or fishing time with the guys. Call the Visitors Bureau at 877-202-5761 for more information.

Outdoor-lovers will find our 117 natural

lakes ideal for fishing, boating, birding, photography, shoreline picnicking, and much more. Our partnerships with local and city park departments, the Indiana DNR, and ACRES Land Trust allow free public access to some of the most beautiful lands and waters in the state. We encourage you to relax and refresh your body, mind, and spirit. Please plan to include Noble County in your travel plans.

For more information about Noble County, please visit our continually updated Web site at

[www.VisitNobleCounty.com](http://www.VisitNobleCounty.com). There you will find our "Festivals and Events Calendar", homepage headlines and highlights, printable brochures, links to accommodations and attractions, and much more. If you prefer to call, our toll free number is **1-877-202-5761**, or e-mail me at [Sarah@VisitNobleCounty.com](mailto:Sarah@VisitNobleCounty.com), and I will be glad to assist you! We look forward to hearing from you soon.....and Welcome to Noble County!



Regards,  
**Sarah Thomas**  
Executive Director



Sincerely,  
**Sara Hobson**  
Volunteer Assistant

**SARAH C. THOMAS,**  
Executive Director  
**NOBLE COUNTY CONVENTION  
& VISITORS BUREAU**

P.O. Box 934,  
Kendallville, IN 46755  
260-599-0060 (Fax 260-599-0066)  
Toll Free: 1-877-202-5761  
[www.VisitNobleCounty.com](http://www.VisitNobleCounty.com)  
email: [Sarah@VisitNobleCounty.com](mailto:Sarah@VisitNobleCounty.com)

## Accommodations

### Hotels, Motels, Bed & Breakfasts, Camping Cabins and Campgrounds

#### HOTELS

Best Western-Kendallville Inn  
621 Professional Way  
Kendallville, IN 46755  
260.347.5263  
866.719.4608  
[bwkendallville@hotmail.com](mailto:bwkendallville@hotmail.com)  
[www.bestwestern.com/innkendallville](http://www.bestwestern.com/innkendallville)  
[www.greatindianagolf.com](http://www.greatindianagolf.com)

Holiday Inn Express-Kendallville  
1917 Dowling Street  
Kendallville, IN 46755  
260.343.0000 or  
1.800.HOLIDAY  
[hiekendallville@yahoo.com](mailto:hiekendallville@yahoo.com)  
[www.hiekendallville.com](http://www.hiekendallville.com)

#### MOTELS

Economy Inn  
1431 W. North St.  
Kendallville, IN 46755  
260.347.3500  
Deluxe Inn  
261 W. U.S. 6  
Ligonier, IN 46767  
260.894.3323

#### BED & BREAKFASTS

The Brick Ark Bed & Breakfast Inn

215 N. Orange St.  
Albion, IN 46701  
260.636.6181  
260.609.6186  
[TammyLuce@verizon.net](mailto:TammyLuce@verizon.net)

Kimmell House Inn  
1397 N. U.S. 33  
Kimmell, IN 46760  
888.892.2194 or  
260.635.2193  
[67gto@ligtel.com](mailto:67gto@ligtel.com)  
[www.kimmellhouseinn.com](http://www.kimmellhouseinn.com)

Laura's Victorian Inn  
600 S. Main St.  
Ligonier, IN 46760  
260.894.9050 or  
260.894.0768  
[lauravictorianinnbedbreakfast@ligtel.com](mailto:lauravictorianinnbedbreakfast@ligtel.com)  
[www.lauravictorian.com](http://www.lauravictorian.com)  
Mirror Lake Bed & Breakfast  
11463 N. 150 W.  
Rome City, IN 46784  
260.854.4675  
[mirrorlakebedandbreakfast@hotmail.com](mailto:mirrorlakebedandbreakfast@hotmail.com)  
[www.mirrorlakebb.com](http://www.mirrorlakebb.com)

Solomon Mier Manor Bed & Breakfast  
508 S. Cavin St.  
Ligonier, IN 46767  
260.894.3668  
574.220.6671  
[stay@smmanor.com](mailto:stay@smmanor.com)  
[www.smmanor.com](http://www.smmanor.com)

#### FAMILY CABINS

Chain O' Lakes State Park  
2355 E. 75 S.  
Albion, IN 46701  
260.636.2654  
866.622.6746 (reservations)  
[www.in.gov/dnr/parklake/2987.htm](http://www.in.gov/dnr/parklake/2987.htm)

#### CAMPGROUNDS

Bixler Lake Campground  
1650 Lake Park Drive  
Kendallville, IN 46755  
260.347.9941 (Apr. 15-Oct. 15)  
[park@kendallville-in.org](mailto:park@kendallville-in.org)  
[www.kendallville-in.org/d\\_5.htm](http://www.kendallville-in.org/d_5.htm)

Chain O'Lakes State Park  
2355 E. 75 S.  
Albion, IN 46701

260.636.2654  
866.622.6746 (reservations)  
[www.in.gov/dnr/parklake/2987.htm](http://www.in.gov/dnr/parklake/2987.htm)

Cottonwood Campground  
1767 U.S. 6 W.  
Ligonier, IN 46767  
574.457.4389

Deer Lake Campground  
6790 W. 100 N.  
Kimmell, IN 46760  
260.856.3095  
574.518.0889 (Apr.-Oct.)  
Harper Lake Campground & RV Resort  
1006 S. 900 W.  
Kimmell, IN 46760  
260.856.2655  
[welovecamping@aol.com](mailto:welovecamping@aol.com)  
[www.harperlakecampground.com](http://www.harperlakecampground.com)

Hidden Diamonds Campground  
200 Weber Rd.  
Albion, IN 46701  
260.636.2246

# Acres of ACRES to Treasure!

**JASON KISSEL, EXECUTIVE DIRECTOR**  
ACRES Land Trust, Inc.

ACRES Land Trust has been preserving natural areas in northeast Indiana since 1960, preserving over 4300 acres in total, including over 800 acres in Noble County. The Noble County nature preserves listed below are open to the public daily from dawn to dusk and have maintained parking lots and trail systems. The preserves are available for hiking, bird watching, photography, and general nature enjoyment. See pages 20-21 — for directions.



preserve. It has a variety of habitats, swamp forest with cottonwood and sycamore trees, upland forest with oaks and hickories, a small lake, a length of shore along the Elkhart River and areas of low wetlands. Birds and wildflowers are diverse and abundant. Wood ducks, mallards, other ducks and coots have been seen on the water; great blue and green herons wade along the shores and woodland birds among the trees. Cardinal flowers, marsh marigolds, blue flag and marsh mallow are a few of the flowers that bloom here. There are two trail access points, one from the IDNR Public Access Site on the north branch of the Elkhart River, and a trailhead off Eagle Island Rd.

## Lloyd W. Bender Memorial Forest - Albion, IN

You enter this 116-acre preserve on a short boardwalk in a wetland, go uphill, then down, then up, then down again traversing wetland forest, upland forest, and area of forested flood plain of the Little Elkhart River called "the spreads". The trail will also lead you through a sedge meadow. The variety of habitats is more than matched by the variety of trees, birds and wildflowers. There are burr oaks, white oaks, hickories, swamp white oaks, red elms, black willows, green and black ash, cottonwoods and red maples. Plants include royal and cinnamon fern - which can be seen as large as six feet tall within this preserve.

## Detering Nature Preserve - Kendallville, IN

In the past this preserve served as a "Green Grocer" farm where vegetables were grown and sold to people of Kendallville and the area around. Now trees, including many redbuds, grow where corn and beans and other produce once grew. Round Lake forms a wetlands boundary along the northeast part of the preserve. Plants, in addition to the trees, include shrubby cinquefoil, red osier dogwood, wild iris, cattails and sedges. Birds are as varied as the plants and deer are seen frequently.

ACRES continues to preserve land in Noble County and as of this printing, are closing on two additional nature preserves within the County. To learn more about ACRES and how you can get involved, visit their website at [www.acreslandtrust.org](http://www.acreslandtrust.org), or call their office at (260) 637-2773. ACRES is a not-for-profit organization dedicated to preserving natural areas.

## Edna Spurgeon Nature Preserve - Ligonier, IN

This 65-acre preserve was ACRES' first acquisition in 1961 - a gift from Edna W. Spurgeon. The property contains an area of low ridges or kames left by glaciers and cut by glacial melt water. The locals refer to this area as "The Knobs". As you travel along the 1.2 mile loop trail, you will discover a climax forest of beech, sugar maple, and tulip poplar trees that are among the largest in the state. Visitors are amazed at the blanket of wildflowers that are present within this preserve from mid April through the summer. Blue-eyed Mary, bloodroot, hepatica, celandine poppy, Dutchman's breeches and squirrel corn are present in great abundance.

## Lonidaw Nature Preserve - Kendallville, IN

Lonidaw is a Native American name meaning Spirit Queen of the Woods. The wife of Potawatomi Chief Simon Pokagon, bore the name. This 25-acre preserve is known for its trillium display that typically is at peak near May 1st. The preserve also contains a kettle lake along with numerous birds and other wildlife. The one mile trail leads you through beech and maple trees on the high ground and sugar maple, red elm, walnut and hackberry on the lower ground.

## Art Hammer Wetlands - Rome City, IN

At 373 acres, the Art Hammer Wetlands is ACRES' largest

**YES! I'd like to automatically receive the next FREE issue!**

"Lakes, Waterways, and Outdoor Recreation Guide" is published annually in May by the Noble County Convention & Visitors Bureau. We'll be glad to send each issue to you automatically!

*(Please print clearly! Thank you!)*

Name: \_\_\_\_\_

Mailing Address \_\_\_\_\_

City, State, & Zip \_\_\_\_\_

Email \_\_\_\_\_

Where did you pick up this brochure? \_\_\_\_\_

**Mail to: PO Box 934, Kendallville, IN 46755**

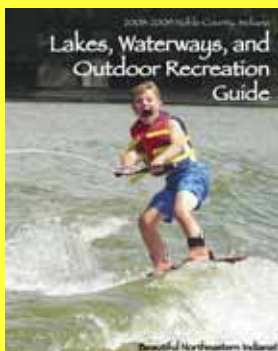
**Fax to: 260-599-0066**

**E-mail this info to [Sarah@VisitNobleCounty.com](mailto:Sarah@VisitNobleCounty.com) and put**

**"Lake Guide Request" in the Subject line.**

**[www.VisitNobleCounty.com](http://www.VisitNobleCounty.com)**

**1-877-202-5761**



## Leisure Time in the Country

“Agritourism” and “Rural Tourism” are words we’ve just started hearing within the past several years. Both are the blending of an agricultural experience with tourism, and they abound in Noble County. Whether you are shopping at a local farmers’ market for fresh from the field produce, picking your own strawberries, hunting for just the perfect pumpkin or taking a hay ride, you are participating in Agritourism. Watch [www.VisitNobleCounty.com](http://www.VisitNobleCounty.com) for a new section devoted exclusively to Rural and Agritourism. These are just a few of our agritourism offerings:

Unique to Noble County, you find Wolf’s Giant Bird and Animal Swap Meet and Flea Market. Located between Albion and Kimmell, and held 4 Saturdays per year, this event draws over 300 dealers, and thousands of lookers and buyers. Call 260-635-2356 for details.



JENNA HAGEN



ENDA LEEDY



Orchard Hill Farms is a family-owned and operated, 10,000+ tree orchard just outside of Kendallville. Stop by their barn-side market for fresh-picked fruit, honey, local maple syrup, apple butter and more.

Group tours by pre-arrangement.

During the summer months, you’ll find pick-your-own-strawberry patches and blueberries in the County along with farmers’ markets in some of our towns.

During the month of October, Fashion Farm in Ligonier becomes “Pumpkin Fantasyland,” featuring pumpkins of every size, wagon rides, pumpkin pies, pumpkin cookies, and pumpkin ice cream! Enjoy Fashion Farm Restaurant all year with home-cooked meals daily.

## Noble Co. in scenic northeastern Indiana!



Educational museums & unique attractions.  
Lakes, Parks, Trails & Nature Preserves.

Rural/Agritourism: Orchards, Farmer’s Markets, U-pick fields and more! Fabulous festivals! Charming, historic towns! Great Golf!

Ask about special discount packages!

Call or go online for **FREE BROCHURES!**

Visit [NobleCounty.com](http://NobleCounty.com)

1-877-202-5761

Noble County, Indiana  
Convention & Visitors Bureau

## What are you seeking?

Wellness? Strength? Acceptance?

Find it at the Cole YMCA!



YMCA  
We build strong kids,  
strong families, strong communities.

Preschool Babysitting Adult / Youth Leagues Women’s Circuit Room  
Specialized Fitness Programs Silver Sneakers Aquatic Exercise / Swim Lessons

## Cole Center Family YMCA

700 South Garden Street, P.O. Box 233, Kendallville, Indiana 46755  
Across from East Noble High School

260-347-YMCA • Visit us on the web: [www.coleymca.net](http://www.coleymca.net)

## Merry Lea: Environmental Education Takes Many Forms

Merry Lea Environmental Learning Center is an impressive 1,150-acre nature preserve located just south of Wolf Lake in the southwestern corner of Noble County. Like many other preserves, Merry Lea offers hiking trails, open free of charge, from dawn to dusk. Casual hikers will find a diversity of ecosystems to explore: prairies, woodlands, oak savannah, swamps, bogs, fens, shrub-carr, marsh, and wet meadows.

For those who desire a little more structure or guidance, Merry Lea is a great place to learn from professional naturalists. Staff members hold degrees in environmental education, ecology, entomology, forestry, and agriculture. Public programs include guided hikes, canoe trips, nature photography workshops, and more. “NatureFest”, held each spring, is a great weekend overview showcasing much of what Merry Lea has to offer. This family-friendly event focuses on the plants, animals, and ecosystems of northern Indiana. It offers hikes and workshops for all ages on topics such as wild edibles, geocaching, geology, and just enjoying the beautiful setting. Overnight camping is an option.

Tours are also available of the award-winning Rieth Village, Merry Lea’s environmentally friendly field station for undergraduate studies that has earned Indiana’s first platinum rating from the U.S. Green Building Council.

For a complete listing of public programs, go to <http://www.goshen.edu/merrylea/merrynews/Upcoming.php> or contact Jennifer at 260-799-5869 or email [jenniferhs@goshen.edu](mailto:jenniferhs@goshen.edu).

## Black Pine: Up Close

BY LORI GAGEN

Children today could easily believe that lizards, snakes, parrots, and tortoises all come from pet stores or private breeders. Black Pine Animal Park is helping to teach people that only in recent years have such animals been so widely available to the general public,



TAMI KREAGER

and how their actions can help wildlife stay where many feel it should be, in the wild.

Exotic, colorful birds such as macaws, Amazon parrots, and cockatoos are captured by the thousands from exotic lands, but few survive the long journey to private homes. Rare reptiles, monkeys, and other non-domestic species are traded as “pets” and wind up victims at the hands of people who don’t understand their needs, behaviors, or the health dangers they pose. In the U.S. alone an estimated 600,000 exotic animals are illegally imported every day.

So what can a small, rural non-profit sanctuary do? By providing an opportunity for people to observe up close and hear the personal stories of animals that have been born, bought and sold, then displaced from private homes, they hope to plant a seed of awareness that will help affect real change.

Black Pine Animal Park currently houses more than 85 exotic displaced “pets” and retired performers. Visitors will see Bengal tigers, leopards, chimpanzees, monkeys, birds, reptiles, llamas, donkeys, bobcats, and more representing nearly 50 species. Many of the animal residents that found permanent refuge at Black Pine are endangered species. The opportunity for

people to learn how animals like these can be so easily obtained, often legally, is alone an educational experience that pulls at heart strings and raises awareness that real change is needed.

Black Pine is open daily to the general public from Memorial Day through Labor Day, and selected dates during the off-season. A minimal admission fee is charged for ages three and up to help fund the ongoing care for the animals. A largely volunteer staff runs the day to day sanctuary operation. For more information or to plan a visit go to [www.blackpineanimalpark.com](http://www.blackpineanimalpark.com) or call the park office at (260) 636-7383.

## Gene Stratton-Porter: Early Environmentalist

BY DAVE FOX

Going Green and environmental education are relatively new concepts – or are they? Gene Stratton-Porter lived from 1863 to 1924, yet her life, literature, and photography warmly embraced the environment from the Limberlost Swamp in Adams County to Sylvan Lake in Noble County as well as many other nearby areas.

Her love of the outdoors and the creatures and plants that filled the woods, streams, and prairies was the inspiration

for Indiana's best selling author and one of the world's earliest nature photographers. She watched the wetlands drained and the majestic trees felled to make way for productive farmland. This made her realize that society was growing further and further away from the natural world. Her literature was an opportunity to bring the outdoors inside. People of all ages, regardless of where they lived, could enjoy natural areas and the creatures that inhabit them simply by reading one of her books, whether it was a fictional story such as *A Girl of the Limberlost* or a nature study like *The Moths of the Limberlost*. (2009 is actually the 100th anniversary *A Girl of the Limberlost*!)

The Gene Stratton-Porter State Historic Site located near Rome City not only preserves her home, but also her legacy of environmental thinking. The 125 acre site has woods filled with wildflowers, a formal garden, access to some of Sylvan Lake's best ice fishing, and more.



Visitors who enjoy to the site may also take an interpretive nature walk with the site naturalist, pick up free wildflower guides or enjoy environmentally-oriented events such as Go Green with Gene, the Wildflower Walk & Brunch or Owl-oween throughout the

year. Educating people about today's natural world is the legacy Gene Stratton-Porter still shares with us today. She once wrote, "In the economy of Nature, nothing is lost." This is the same message that echoes throughout today's green movement.

**VISIT US  
ONLINE AT**  
**VisitNobleCounty.com**



# Dude's Dairy Treat

*& Restaurant*

## SUMMER HOURS

Mon.-Thurs. 6AM-9PM  
Fri. 6AM-10PM • Sat. 9AM-10PM  
Sun. 11AM-9PM

**NOW SERVING WINGS!**  
**5-8PM, MON.-SAT.**

**Sandwiches, Wraps,**



**Fine Coffees, Smoothies, Soup**

**Ice Cream, Novelties**



848 N. Lima Road, Kendallville, IN  
**(260) 349-9177**

There has never been a time in Noble County when horseback riding was not an important part of our culture. From reliable transportation to today's leisure and competitive events, all things horses are an important part of who we are.

## Noble County Saddle Club

Since its inception in 1945, the Noble County Saddle Club has served as a family-oriented organization with the mission of bringing people together who share a common interest in equestrian events and community conscientiousness. Even if you don't own a horse, you are welcome to join or enjoy the events. Each year the club sponsors horse shows and mounted shooting competitions. These are fun spectator sports, and guests are always welcome. Check [www.noblecountysaddleclub.org](http://www.noblecountysaddleclub.org) for a full schedule of events.

The Noble County Saddle Club is pleased to share their grounds in Albion for other community events, such as the Albion Harvest, Boy Scout camping, and a swap meet benefiting the local 4-H program. The Noble County 4-H Horse

and Pony Club also holds weekly workshops at the facility. This gives our 4-H kids a safe place to learn and practice good horsemanship skills. Many of these workshop leaders are members of the Saddle Club.

The Saddle Club stays involved in the community by making visits to assisted living facilities and presenting mini-horseshows for the residents, participating in local parades and benefit events, and Christmas caroling on horseback. Camp-outs, trail rides, pot-lucks, and fun shows keep the members active and enjoying one another's company all throughout the year. For more information, visit [www.noblecountysaddleclub.org](http://www.noblecountysaddleclub.org) or email [info@noblecountysaddleclub.org](mailto:info@noblecountysaddleclub.org).

## York Hills Horse Park: Only Horses All The Time

York Hills Horse Park is a "bring your own" horse trail riding facility at the heart of Noble County. Located two miles west of the stoplight in Albion, York Hills is a privately owned scenic



BECKY ORR

park offering over 25 miles of riding trails through fields and woodlands. Enjoy the many trails, wildlife, wildflowers and trees. The facility includes a large parking area, picnic pavilion for group activities, and a log cabin office to check in.

York Hills is growing attraction for equine visitors to Noble County, and is gaining attention within equestrian groups. With a desire to host competitive events, more spectator opportunities may be on the horizon. For details, call: 260-564-0305 or 260-636-7858 or visit [www.YorkHillsHorsePark.com](http://www.YorkHillsHorsePark.com).

## Fairs, Festivals and Fun Events!

Beginning with Merry Lea's Birding Competition in March all the year through to Christmas on Main Street in Historic Downtown Kendallville, Noble County has an event for just about everyone!

Noble County's Fair in July in Kendallville ranks among the top 10 in the state, and the Memorial Day weekend and Labor Day weekend Bluegrass Festivals in Kendallville draw thousands of folks for the "Mid-west's biggest parking lot pickin' festivals!"

Wolf's Bird and Animal Swap Meets take place only 4 Saturdays each year and continue to attract newcomers!

Located at 0885 N. 650 W. in Kimmell. Ligonier's Labor Day weekend

# SUBWAY

eat fresh.®




SUBWAY

Cookie Platters • Fruit Trays  
Veggie Trays • Meat & Cheese Trays



YOUR BEST CHOICE FOR:

Boating, Picnics,  
Parties, Reunions or  
any get-together!

CATERING PLATTERS & GIANT SUBS

CALL US FOR ALL YOUR CATERING NEEDS!

DRIVE THRU

252 KELLY ST., ROME CITY

854-9092

901 NORTH RIDGE RD., ALBION

636-1110

Marshmallow Festival has been featured on the "Food Network" and has thousands of loyal followers.

The annual Apple Festival of Kendallville attracts an estimated 60,000 guests over the two days in October, and Stone's Trace in Ligonier offers an authentic 1800's pioneer festival on the grounds of the oldest building in Noble County.

Too numerous to mention, check our Web site for the most up-to-date event information!

www.VisitNobleCounty.com, then click on "Festivals and Events" button on the blue bar at the top of the homepage.

There you will find an interactive calendar with lots of details, including contact names and numbers for more information.



## Lakes & Waterways

### Boat Rental Locations

**CHAIN O' LAKES STATE PARK:** boats, canoes, and paddleboats rented by the hour or day. (260) 636-2654

**HARPER LAKE CAMPGROUND:** Pontoon; access to 4 connecting lakes. (260) 856-2655

### Canoeing and Kayaking

Both the North and South Branches of the Elkhart River afford the canoeist and kayaker a relatively leisurely paddle through flat, low ground of glacial outwash sediments. Marshy areas join rolling fields. The flow of the South Branch is perennial, although slow, and the channel will vary in depth. Some portage may be required. There are three put-ins offering several different options in trip length and scenery. For an interesting read and complete information on the Canoe/Kayak Trail in Noble County, including details between the 3 put-ins, go to [www.in.gov/dnr/outdoor/canoe/elksouth](http://www.in.gov/dnr/outdoor/canoe/elksouth)



HOWARD LUEHRS

[www.in.gov/dnr/parklake/maps/chain\\_trail.pdf](http://www.in.gov/dnr/parklake/maps/chain_trail.pdf). Of course, any of our quiet lakes are

great for exploring by canoe or kayak and provide calm water for very easy paddling.



**VISIT US ONLINE AT**  
**[www.VisitNobleCounty.com](http://www.VisitNobleCounty.com)**

# Chain O' Lakes:

# The crown jewel of Noble County



NCCVB FILE PHOTO

Eight connecting glacier-carved kettle lakes, forming a "chain of lakes," along with spectacular wooded scenery make Noble County's Chain O' Lakes State Park a haven for outdoor recreation enthusiasts. The park is only about a mile wide and just four miles long but encompasses 2,718 acres, including 212 surface acres of water. More than 7 miles of widely varying shoreline is one of the unique features of this beautiful park. There are a total of 11 lakes within the park. This area, once inhabited by Miami Indians and more recently by settlements of pioneers, is now available to all of us to enjoy!

With on-site boat rental, old salts and want-to-be-mariners can paddle connecting lakes and explore peaceful back waters. The park is a small-boater's fishing paradise with launch ramps and offers a fishing pier as well. More than 10 miles of easy and moderate hiking trails meander throughout the park. The 1915 restored schoolhouse nature center offers seasonal interpretive services and programs. Camping options range from primitive tent camping to electricity for RV's. Tree-sheltered family cabins overlooking the lakes are a great option for park lovers who prefer a bunk and a woodstove. Bird-watchers will find Chain O' Lakes to be one of the best locations in the county, as will nature photographers.

Whatever it is that draws you to Chain O' Lakes, we're sure that you'll want to return again and again... and we welcome you!

## Harper Lake Campground



*Seasonal or Weekend Campers Welcome!*

*We offer fishing, swimming, sandy beach, playground, waterfront sites, pontoon and other boat rentals, nature trail and woods, arcade, campstore and bait shop.*

**260-856-2655**

welovecamping@aol.com

**1006 Sout 900 West,**

**south of Kimmell near Knapp Lake.**

See for yourself. Visit our Web site then visit us!

**[www.harperlakecampground.com](http://www.harperlakecampground.com)**

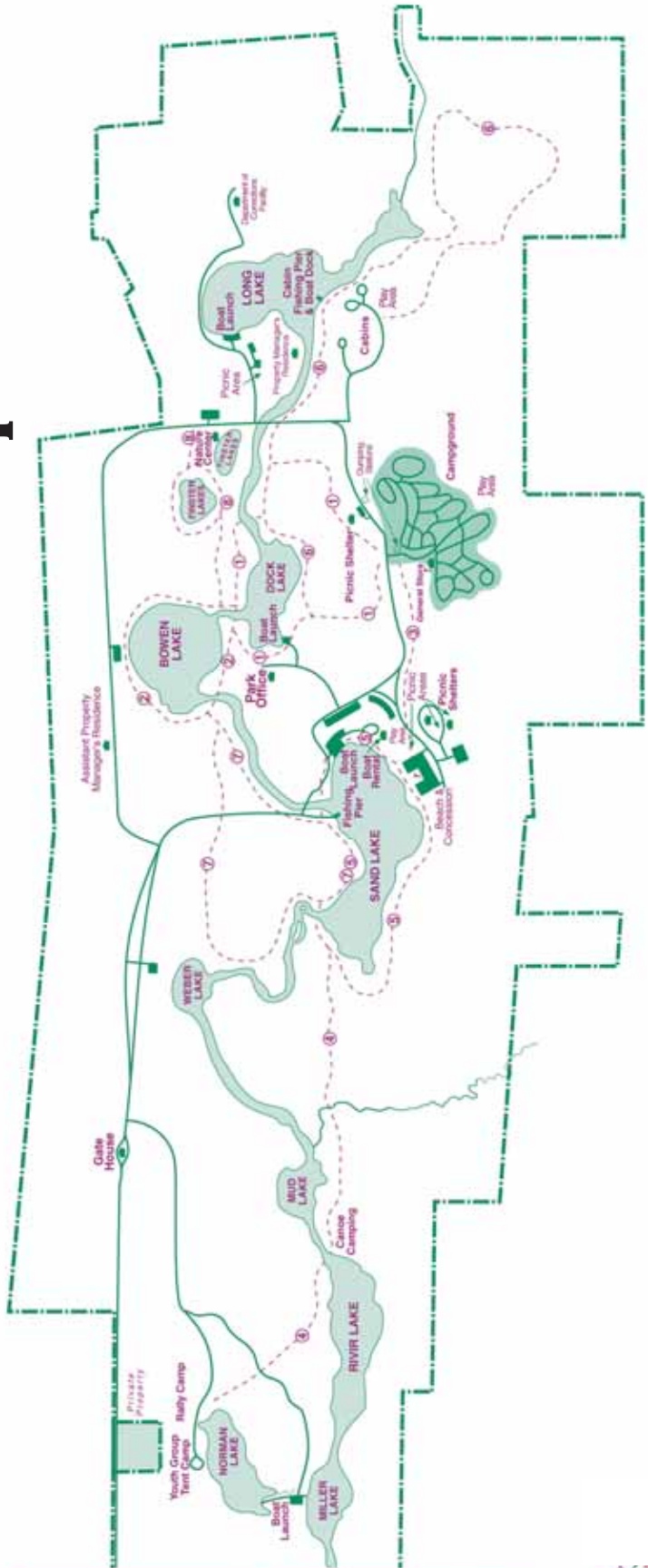


## Kendallville Party Store

**Wines • Liquors • Cordials**  
**Domestic and Imported Beers**  
**Kegs • Special Orders**

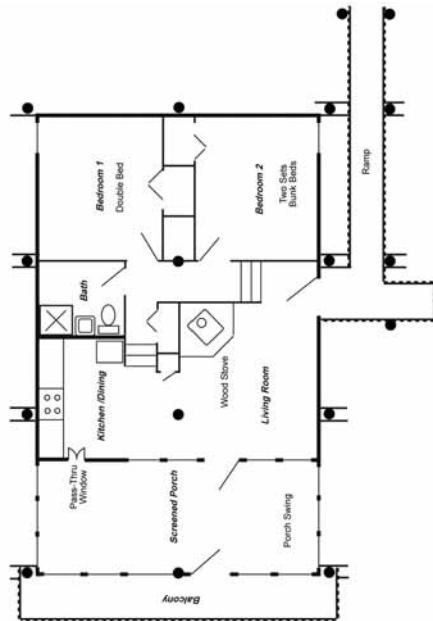
**102 N. Main St. • Kendallville • 347-3332**  
**Mon.-Thurs. 9 a.m.-10 p.m. • Fri.-Sat. 9 a.m.-Midnight**

# Chain O' Lakes Park Map



## Family Cabin Floorplan

Chain O'Lakes State Park  
Family Cabins



## Recreation at Chain O' Lakes State Park

Bird-watching, Boating, Boat Launch Ramps, Boat Rental, Cabins, Camping, Cross-Country Skiing, Dump Stations, Fishing, Fishing Pier, Hiking Trails, Nature Center with Seasonal Interpretive Services, Photography, Picnicking, Shelter-house, Swimming Beach, Youth Tent Areas.

**FOR MORE INFORMATION**, contact  
Chain O' Lakes State Park  
2355 E. 75 South  
Albion, IN 46701  
(260) 636-2654

To download a park map, go to:  
[www.state.in.us/dnr/parklake/maps/parks/chain\\_trail.pdf](http://www.state.in.us/dnr/parklake/maps/parks/chain_trail.pdf)  
The Central Reservation System for all types of camping is 1-866-622-6746 or online at [www.camp.IN.gov](http://www.camp.IN.gov)